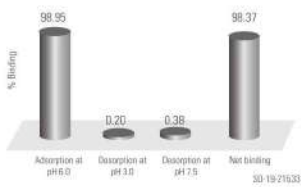


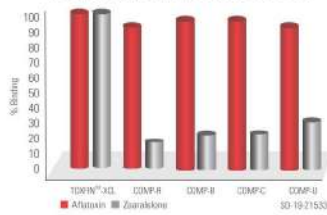
TOXFIN™-XCL

TOXFIN™-XCL has proved to be the most effective solution for mycotoxin menace through evaluation procedure comprising of *in vitro* tri phasic mycotoxin binding analysis and *in vitro* contact time analysis.

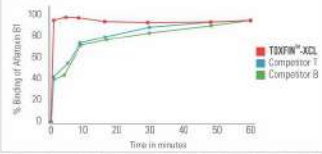
AVERAGE NET BINDING WITH AF B1 USING IN VITRO TRI PHASIC EVALUATION



IN VITRO RELATIVE BINDING STUDIES



INFLUENCE OF TIME ON BINDING PERCENTAGE OF AFLA B1



Influence of time on binding percentage of aflatoxin B1 with various toxin adsorbing products. Each experimental data represents net binding of aflatoxin B1 (mean, n=3). TOXFIN™-XCL had the highest binding percentage in shorter time compared to other products. 30-19-21533

FEATURES

- Ideal surface area that binds only mycotoxins and not the nutrients or vitamins
- Presence of selected silicates for maximum adsorption of both polar and non polar mycotoxins
- Proven to be stable across different pH through tri-phasic studies
- Faster binding of mycotoxins proven through contact time analysis

BENEFITS

- Improves health and production of animals
- Reduces immunosuppression caused by mycotoxins
- Maintains organ health
- Ensures feed safety

- Presentation**
25Kg Bag
- Inclusion Level**
1kg Per ton of feed
25g/day/animal

KEMIN

Location : Gazipur
+91-9466939165, +91-8638801864
mail.india@kemin.com | www.kemin.com

FAMI QS

ISO 22000

ISO 22000

ISO 22000

FSSC 22000

ISO 15000

ISO 15000

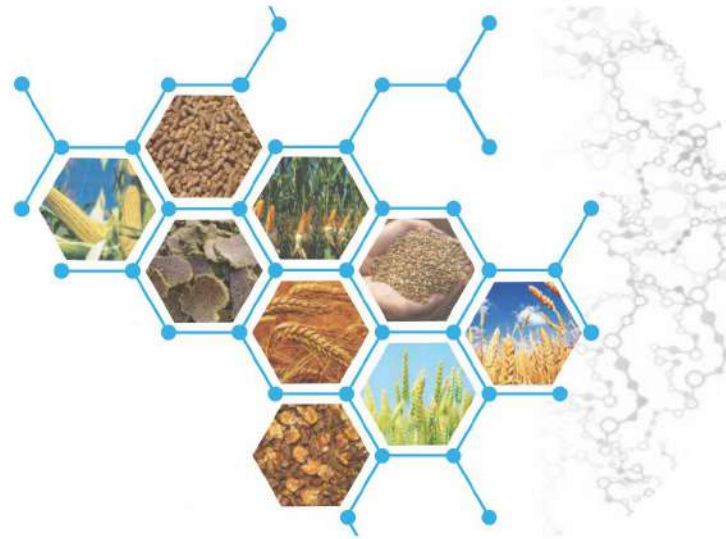
ISO 15000

ISO 15000

ISO 15000

© Kemin Industries, Inc. and its group of companies 2019 All rights reserved. ®™ Trademarks of Kemin Industries, Inc., U.S.A.

SAFE SOLUTIONS
TOTAL NUTRITION



One Stop Solution for Mycotoxin Menace

TOXFIN™-XCL

Advanced Ruminant Toxin Binder

KEMIN

© Kemin Industries, Inc. and its group of companies 2019 All rights reserved. ®™ Trademarks of Kemin Industries, Inc., U.S.A.

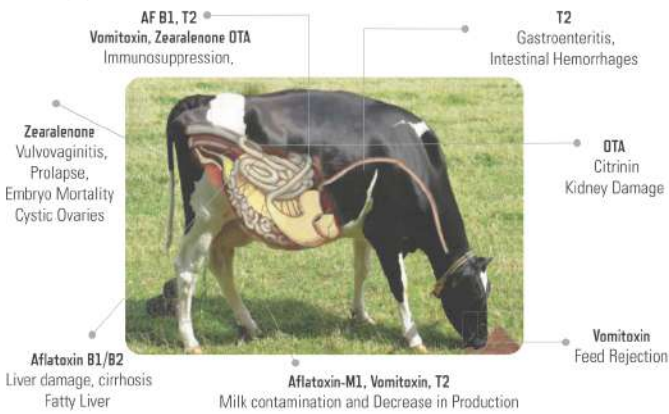
FACTORS AFFECTING MYCOTOXINS OCCURRENCE IN THE ANIMAL FEED CHAINS



Types of Mycotoxins



How Mycotoxins affect the cow ?

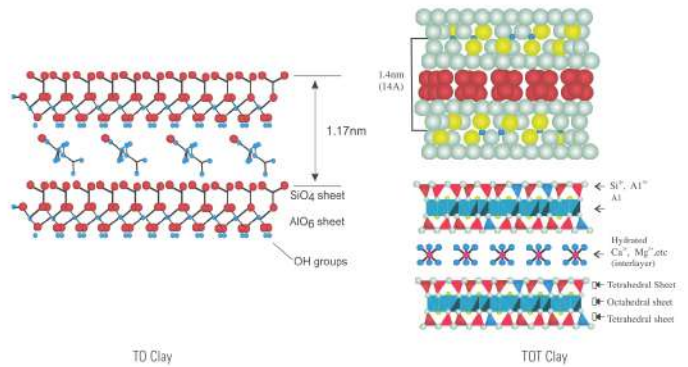


TOXFIN™-XCL

TOXFIN™-XCL is a unique non digestible broad spectrum mycotoxin binder containing "active adsorbents" which effectively binds most prevalent and potent mycotoxins: Aflatoxins, Zearalenone, Citrinin, T2 toxin, and Ochratoxins etc.

- Next generation advanced ruminant toxin binder, developed with unique ten step development process
- Optimized for higher adsorption and reduced desorption
- Synergistic combination of two different activated clays designed for faster binding

ALL CLAYS ARE NOT SAME



To bind all mycotoxins effectively combination of two different clay is the best solution

TOXFIN™-XCL - UNIQUE MODE OF ACTION

