



EFFICIENT SOLUTIONS
TOTAL NUTRITION™

YeoPlus™ +

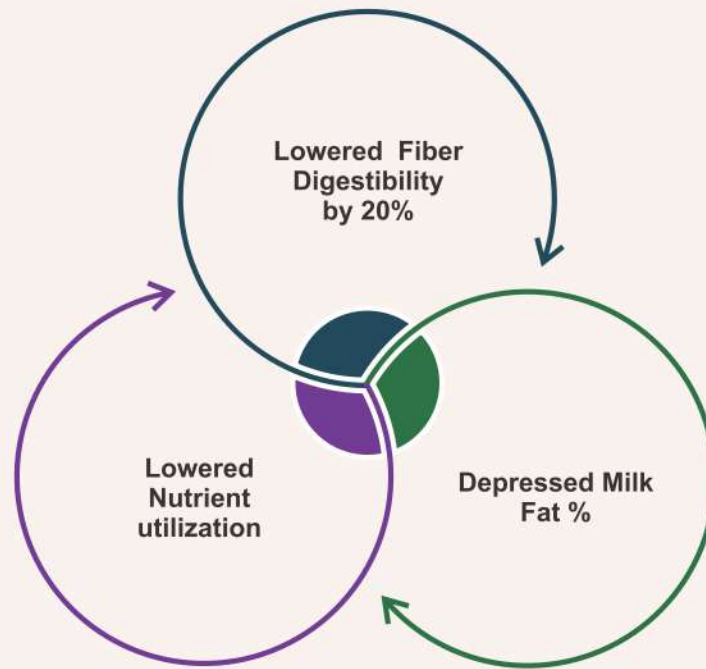
Digestion and Absorption Promoter



Better Dry Matter Digestion,
Absorption and Nutrient Utilization

KEMIN®

Big Challenge



Improper Dry Matter Digestion causes 10-15% Milk Production Loss

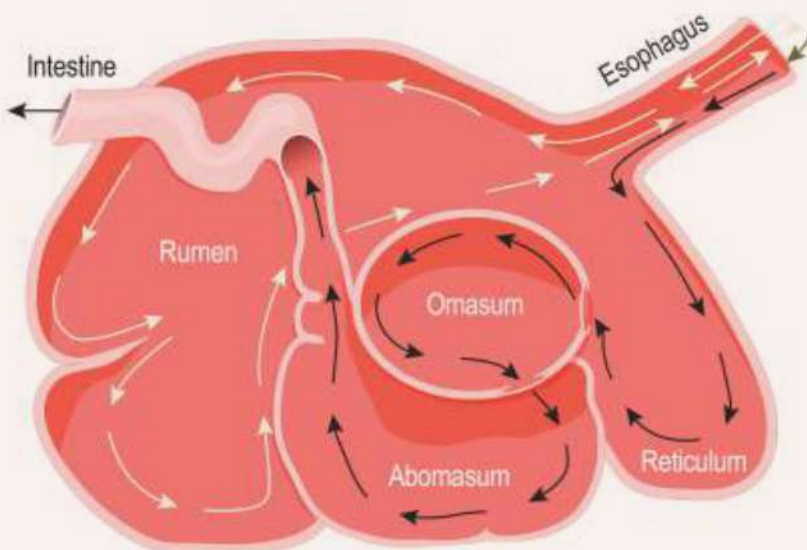
CAUSES

- Disturbed ruminal microflora
- Ruminal acidosis
- Stress

EFFECTS

- Breeding problems
- Laminitis
- Low body condition score
- Lowered milk production

60% of Dry Matter Digestion Happens in Rumen



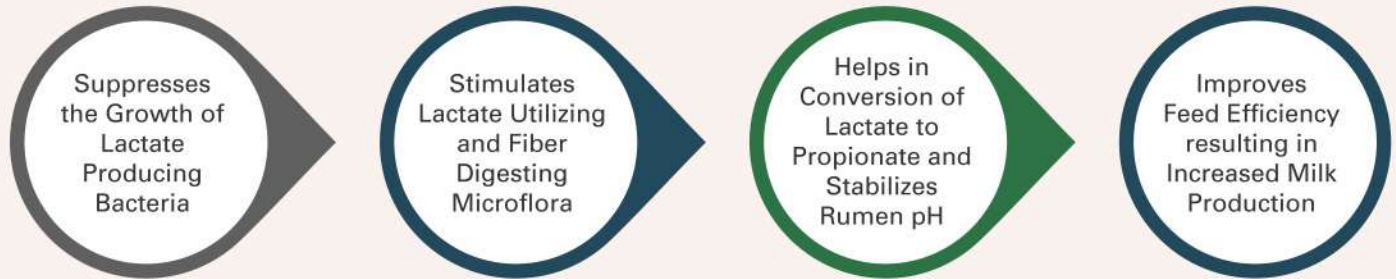
- Dry matter gets digested in rumen by ruminal microflora
- Ruminal microflora comprises of bacteria, protozoa and fungi in billions
- Ruminal microflora need anaerobic condition for dry matter digestion
- *Saccharomyces cerevisiae* (SC1407) helps in restoring anaerobic condition
- Organic chromium propionate ensures efficient nutrient utilization after absorption

Better Dry Matter Digestion, Absorption and Nutrient Utilization Supports Milk Production



Digestion and Absorption Promoter

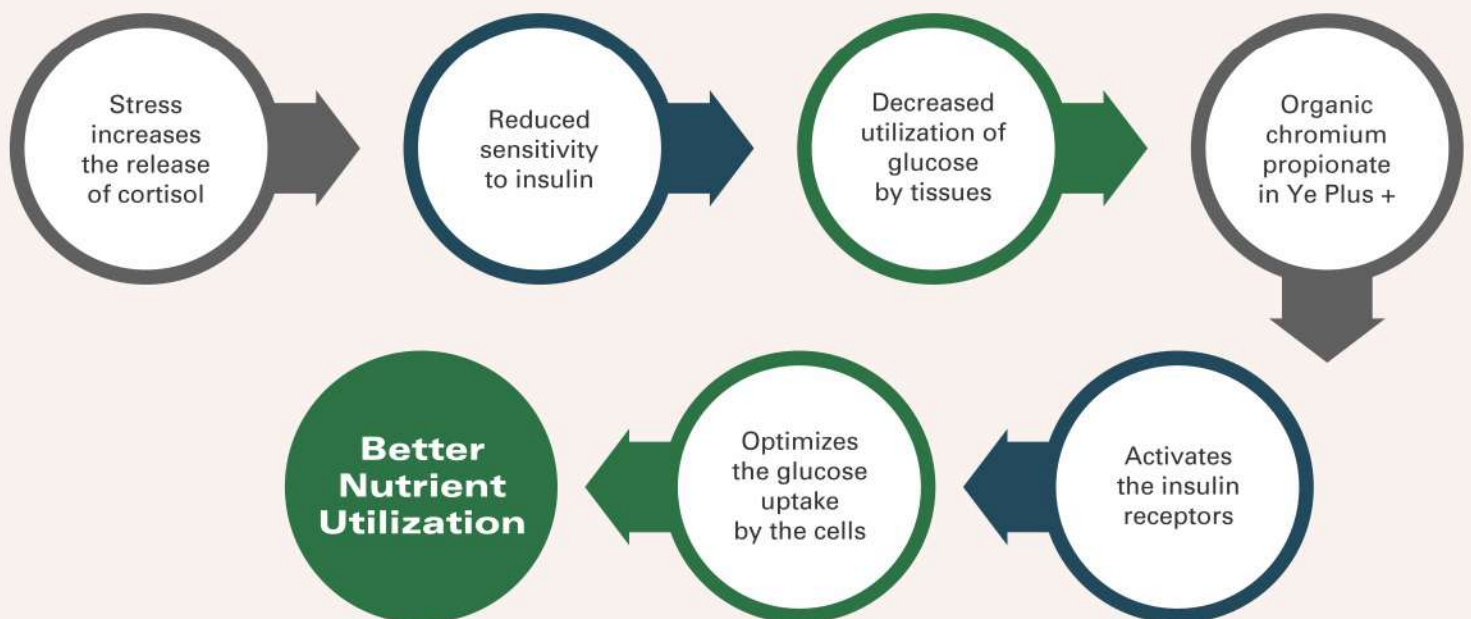
Ye Plus™+ is a digestion and absorption promoter with a unique combination of rumen viable active dry yeast *Saccharomyces cerevisiae* (SC1407) and organic chromium propionate which results in increased milk production



Ye Plus+ ensures Better Dry Matter Digestion

Ye Plus™+ increases the Nutrient Utilization

Chromium Stimulates the Insulin-Mediated Glucose Uptake



Why Ye Plus™+

Unique combination of Rumen viable active dry yeast and chromium propionate

Contains unique *Saccharomyces cerevisiae* (SC 1407) which is specially rumen adapted strain

Strain SC1407 is thermostable upto 75°C, hence it can be used both in pellet and mashed feed

Field Trial of Ye@Plus™+

The trial was conducted to demonstrate the benefits of combination of yeast (SC1407) and chromium propionate supplementation in commercial farm conditions.

Lactation Phase	Early lactation
Usage	250g per ton of feed @ 0.50 INR per animal per day
Feed	Total Mixed Ration (TMR)
Duration	60 Days (Pretrial=30 days, Trial=30 days)
Groups	2 groups (Control=1, trial=1)
Animals	HF Cows (Control=15, Treatment=15)
Parameters	Dry Matter Intake and Milk Yield

Details	*Avg Milk yield / day/cow(Pretrial)	*AvgMilk yield /day / cow(Trial)	*DifferenceKgs
Control group	22.01	22.45	+0.44
Treatment Group	22.28	23.48	+1.20
Difference			+0.76

* Fat Corrected Milk yield in Kgs

*ROI Not Less Than 1: 6

Benefits



Improves milk production



Improves dry matter digestion and nutrient absorption



5 & 25 Kg BAG | 250 - 500 gm per ton of feed

KEMIN®

Location : Gazipur

+91-9466939165, +91-8638801864

mail.india@kemin.com | www.kemin.com

